

Scrutinizer NetFlow & sFlow Analyzer

Submitted by:

[Plixer International](#)

Description:

The [Scrutinizer](#) ZenPack provides direct integration between Zenoss and [Scrutinizer](#). This integration allows network engineers to quickly switch between viewing the event details in Zenoss and the detailed network traffic analysis view in Scrutinizer. Network engineers need to quickly find and resolve network performance bottlenecks before they impact customers and end-users. One of the most effective ways to diagnose network performance problems is by analyzing NetFlow data.

Troubleshooting Network Performance

From a Zenoss Event or Device View, network engineers can quickly navigate to NetFlow Reporting provided by Scrutinizer. With access to NetFlow data, network engineers can:

- See the bandwidth utilization for the router being affected
- Identify which applications and protocols are using the most bandwidth
- Find out which network segments are being used the most ("Top Conversations")

Integration of Zenoss and Scrutinizer

Plixer has built a ZenPack that integrates Scrutinizer and Zenoss. Once installed the Scrutinizer ZenPack will:

- Provide direct navigation from Zenoss to Scrutinizer
- Allow users to move seamlessly between device views in Scrutinizer and Zenoss

1. For limited manual integration, download the free [Scrutinizer & Zenoss Integration Guide](#).

Scrutinizer NetFlow & sFlow Analyzer

The screenshot displays the Zenoss Enterprise web interface. The top navigation bar includes the Zenoss logo, user information (bshichard), and links for Preferences, Logout, and Help. The breadcrumb trail shows the path: /Devices /Network /Cisco /colo3560g.zenoss.loc. The main content area is titled 'Status' and contains several sections:

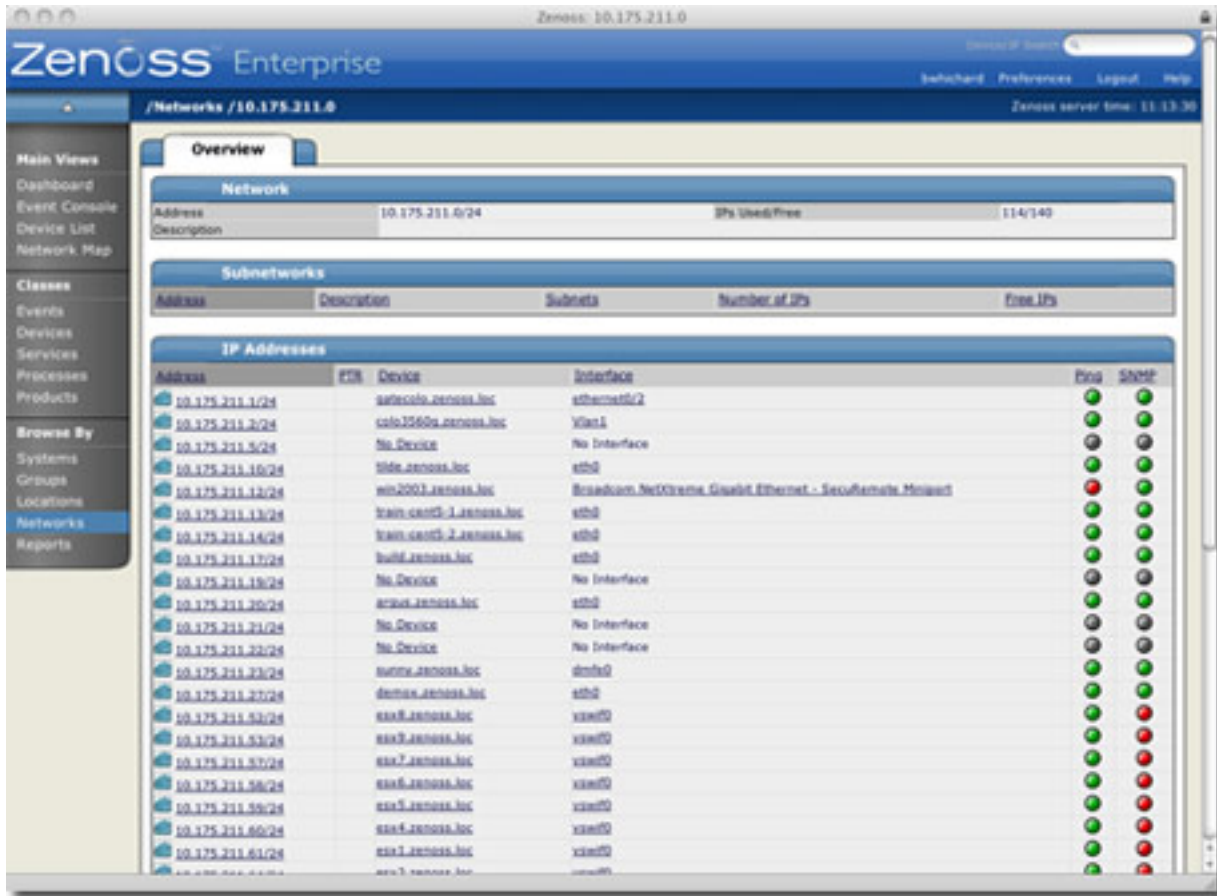
- Device Status:** Shows the device name 'colo3560g.zenoss.loc', IP '10.175.211.2', and status 'Up'. A vertical bar on the left indicates various metrics with colored circles (red, orange, yellow, green).
- Availability Metrics:**
 - Availability: 100.000%
 - Uptime: 99d 23h:21m:00s
 - State: Production
 - Priority: Normal
 - Locks: None
 - Last Change: 2009/04/29 03:21:53
 - Last Collection: 2009/04/29 03:21:54
 - First Seen: 2009/02/27 17:12:42
- Component Type Table:**

Component Type	Status
IpRouteEntry	Up
IpInterface	Up
- Device Information:**
 - Organizers:** Location: None, Group: None, Systems: None, Collector: localhost
 - OS:** Tag #, Serial # FOC122024TK, HW Make Cisco, HW Model Cisco Catalyst 3560, OS Make Cisco, OS Version IOS 12.2(33)SE3, Rack Slot 0, sysName colo3560g, Contact r@zenoss.com, Location Colo
- SNMP Descr:** Cisco IOS Software, C3560 Software (C3560-IPBASE-M), Version 12.2(33)SE3, RELEASE SOFTWARE (N) Copyright (c) 1986-2007 by Cisco Systems, Inc. Compiled Thu 29-Jul-07 18:15 by nashen
- Comments:** Links to [RANCID](#) and [Scrutinizer](#).

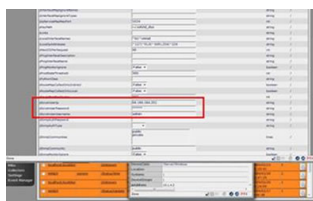
At the bottom, a message states: 'There were 4 errors opening the page. For more information, choose Activity from the Window menu.'

2. Once the Scrutinizer ZenPack is installed, you will see links to Scrutinizer from within Zenoss. These links will be available on the Zenoss Event Details Page, as well as the Zenoss Network Overview Page. These links provide direct navigation to the corresponding Scrutinizer Page for the network device. See screen shots below.

Scrutinizer NetFlow & sFlow Analyzer

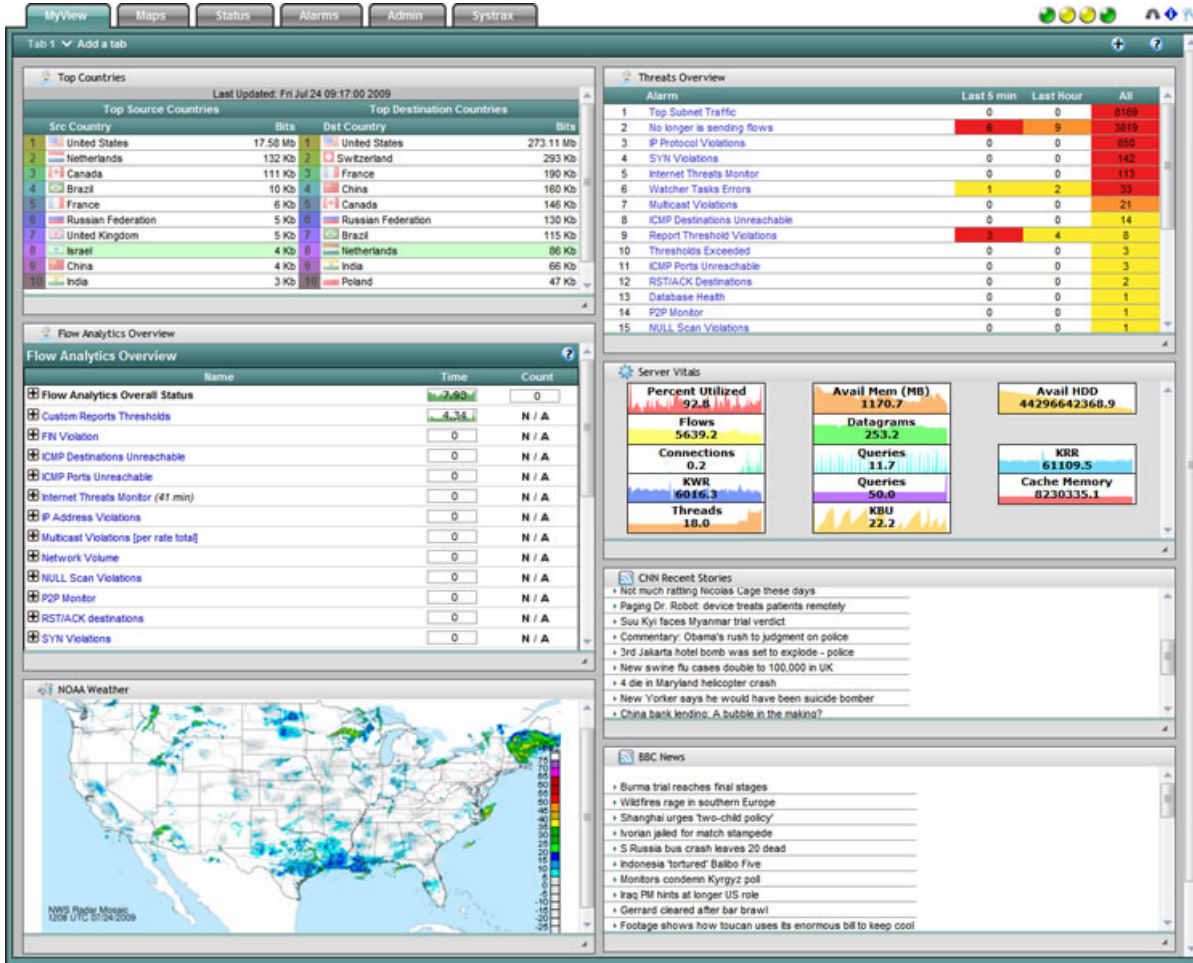


Scrutinizer Web Configuration:

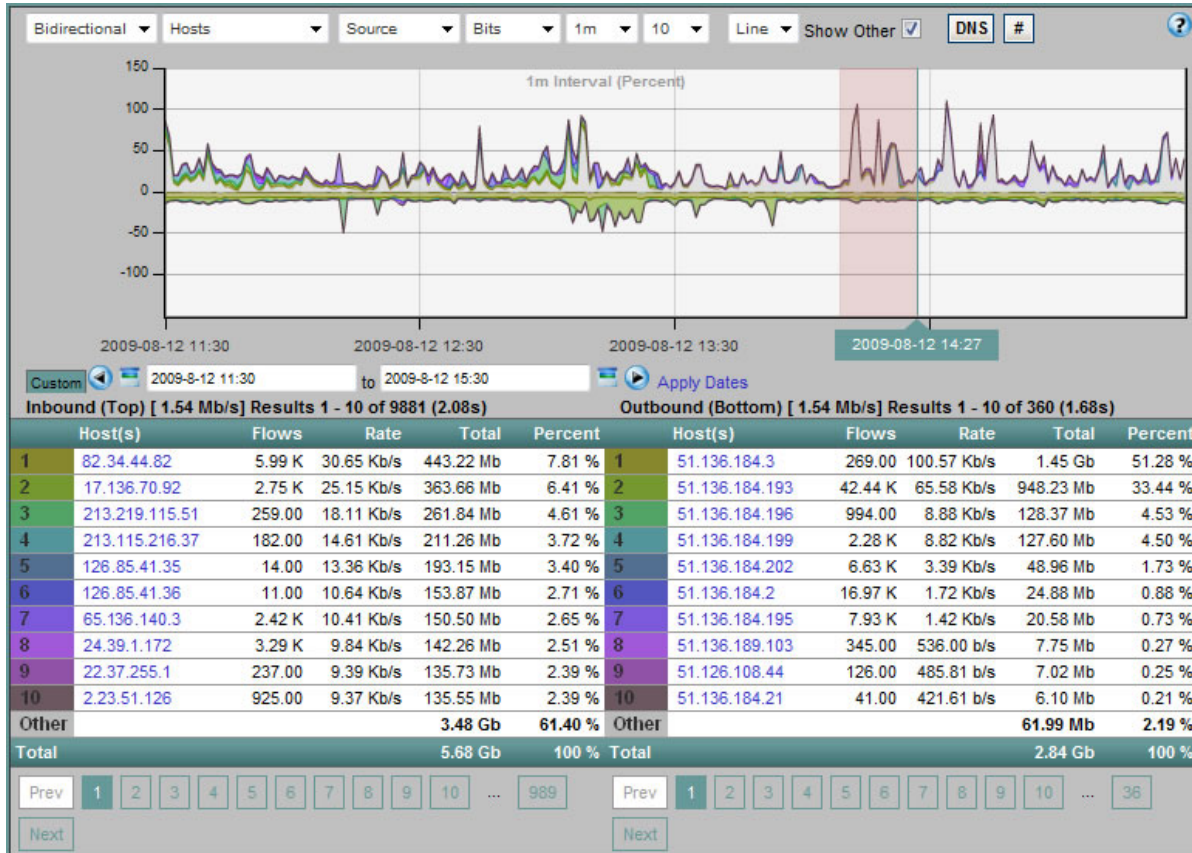


Scrutinizer Screen Shots:

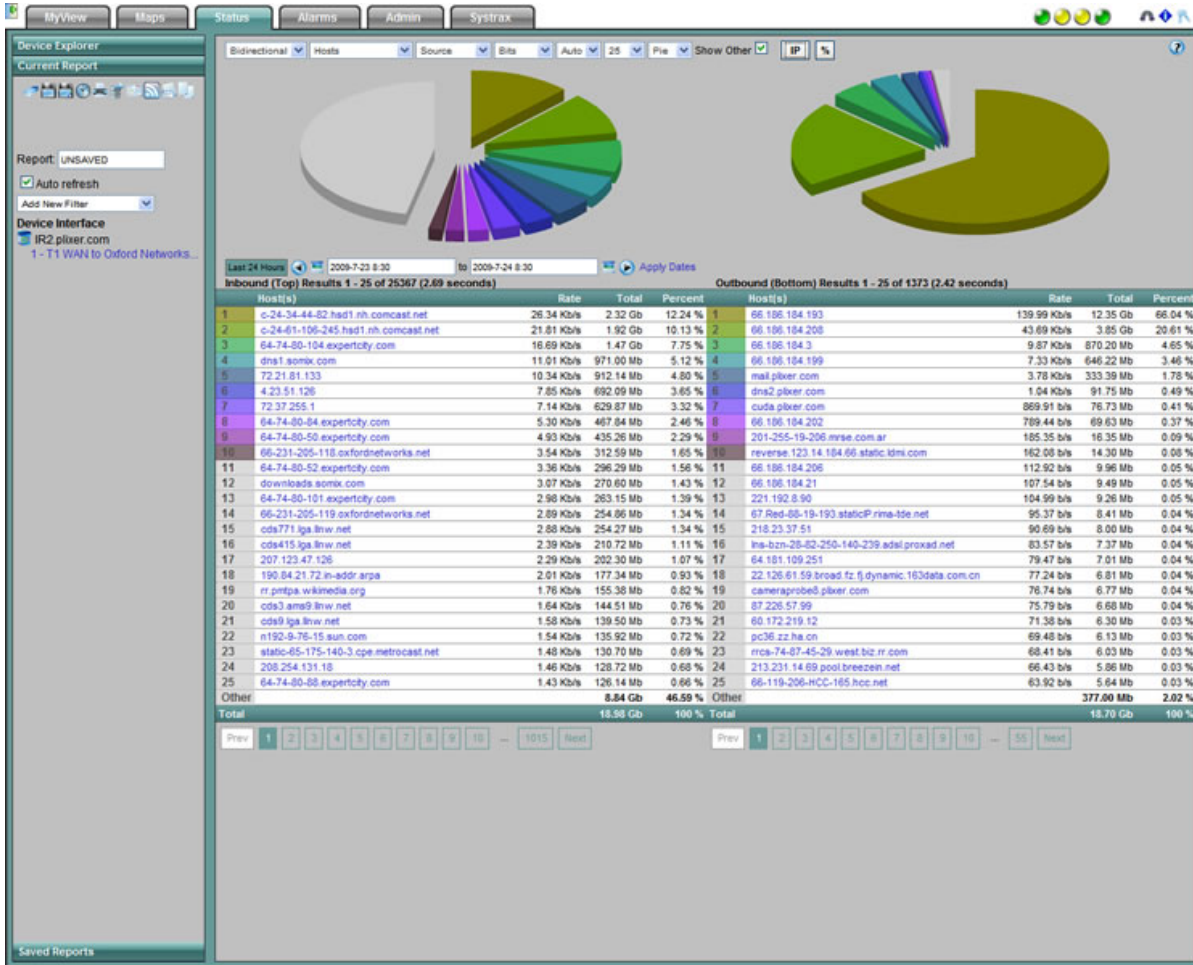
Scrutinizer NetFlow & sFlow Analyzer



Scrutinizer NetFlow & sFlow Analyzer



Scrutinizer NetFlow & sFlow Analyzer



REQUIREMENTS:

- **Zenoss Version:** 2.3
- **ZenPack Dependencies:**
 - External Dependencies:
 - Plixer's [Scrutinizer NetFlow & sFlow Analyzer](#)
 - Installation:
 - download the [Scrutinizer & Zenoss Integration Guide](#).

Source: <http://zenpacks.zenoss.org/trac-zenpacks/browser/zenpacks/ZenPacks.PlixerInternational.Scrutinizer>

Tagged Releases:

- <http://zenpacks.zenoss.org/trac-zenpacks/browser/tags/scrutinizer-1.2>

Change History:

- 1.2 initial Community version

Trac tickets: <http://zenpacks.zenoss.org/trac-zenpacks/report/1>

Known issues: